

CITY OF MURRAY CONTROL MONUMENT CARD

DESIGNATION: D2 AZI

TYPE: CONCRETE MONUMENT W/ CITY DISK

DATE SET: JUNE 2002 QUAD: DEXTER, KY.

HORIZONTAL DATUM: NAD-83 VERTICAL DATUM: NAVD-88

STATE: KENTUCKY COUNTY: CALLOWAY ZONE: KY. S 1602

NORTHING: 1767602.23 FT

EASTING: 890624.48 FT

ELEVATION: 488.13 FT (GPS)

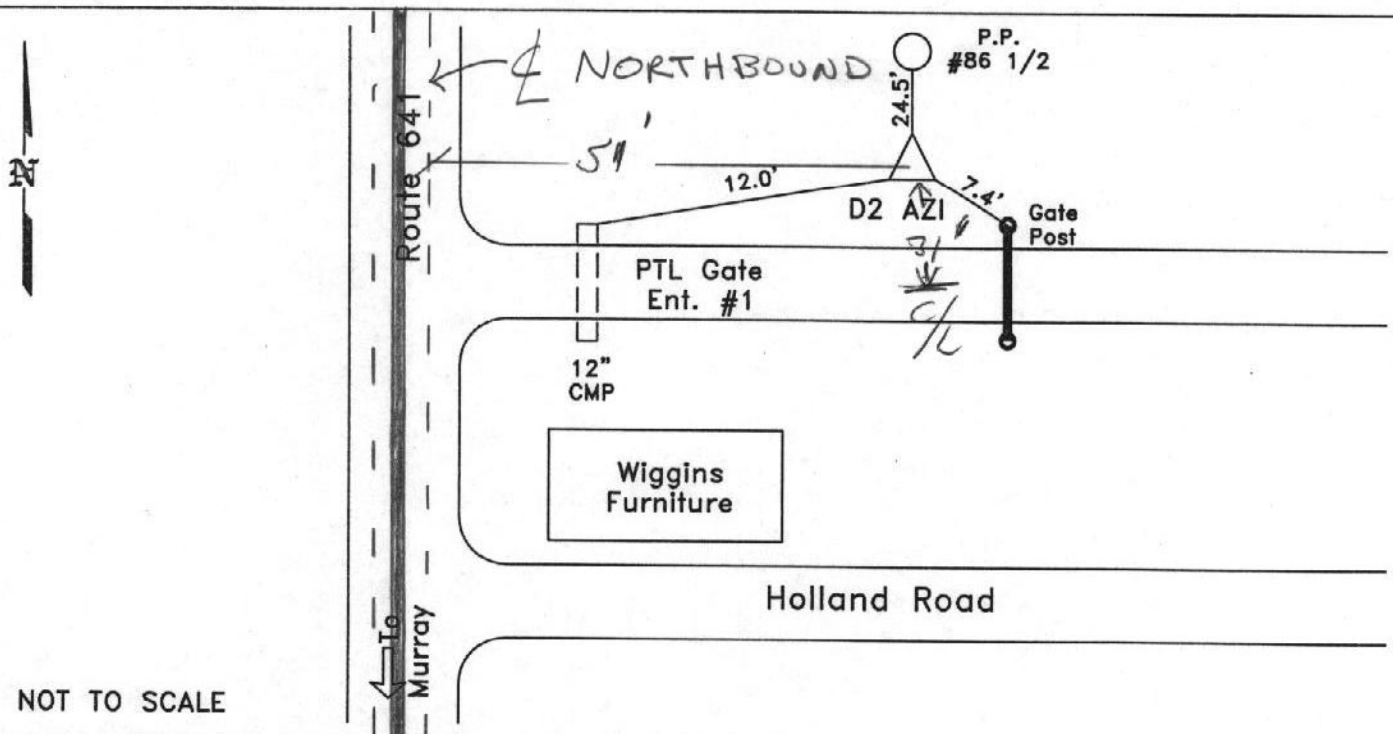
LATITUDE: N 36°39'17.27222" LONGITUDE: W 088°18'22.53947"

SCALE:

CONVERGENCE:

PLANE AZI. TO AZI. MARK:

To Reach: From the intersection of State Route 641 and Holland Road, go north along State Route 641 for 0.1 mile to the station on the right.



GRW Aerial Surveys, Inc.
801 Corporate Dr. Lexington Ky. 40503
(859)223-3999